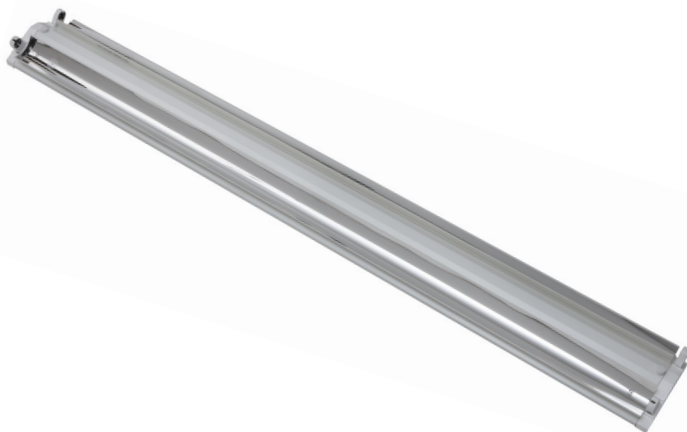




T5 FLARE LIGHT

- ◆ Part of KOJIN's suite of commercial/industrial light fixtures, T5 Flare Lights are a cost effective T5 Fluorescent solution
- ◆ KOJIN's energy saving fluorescent lighting fixtures utilizes integrated Nano Reflectors to create a softer, brighter illumination without increased cost
- ◆ Flare profile results in a wider distribution of light
- ◆ Suitable for use in hallways, warehouses and industrial workplaces
- ◆ Made of heavy gauge steel
- ◆ Compatible with motion and occupancy sensors
- ◆ Increased foot candles and long life
- ◆ Reduce energy consumption without compromising lighting quality
- ◆ Available in 2-lamp, standard or high-output, universal voltage 120-277V or 347V
- ◆ UL and cUL Classified*, a testament to our ongoing commitment to safety
- ◆ Qualifies for government / utility rebates (where available)
- ◆ 1 year warranty on ballast

*UL Certified products were manufactured / produced prior to our withdrawal from the UL Program and met UL requirements at that time





T5 FLARE LIGHT

Specifications

Dimensions

KT5FL120 = 46.7" (1186mm) X 5.5" (140mm) X 1.76" (44.7mm)

Weight

KT5FL120 = 5.7 lbs (2.6kg)

Electrical Specifications

Power Factor: ≥ 0.95

Input Power

KT5TFL120-L2 = 2 X 28W

KT5FL120-HO = 2 X 54W

Ballast Factor @ 120V

KT5TFL120 = 0.98

KT5FL120-HO = 0.97

Ballast Factor @277V

KT5TFL120-L2UV = 0.99

KT5FL120-L2UV-HO = 0.99

Ballast Factor @347V

KT5TFL120-L2V347 = 0.95

KT5FL120-L2V347-HO = 0.99

Operation Frequency: 50-60HZ

Total Harmonic Distortion: $\leq 7.5\%$

Energy Efficiency Index: $\geq 90\%$

Internal Protection Functions: Protection Circuit

Ambient Temperature: $-10^{\circ}\text{C} - +55^{\circ}\text{C}$

Storage Temperature: $-20^{\circ}\text{C} - +55^{\circ}\text{C}$

Ballast Type: Electronic

Starting Method: Instant / Program Start

Input Voltage: AC 120V-277V, 347V

Input Frequency: 50/60 Hz

Ballast Life: 50,000 hours

Warranty:

Guaranteed for one (1) year against mechanical defects in manufacture. Factory installed internal components such as ballast and wiring are guaranteed for one (1) year from date of purchase. Warranty applies to repair or replacement of defective parts and does not include labor costs.

Approvals:

UL and cUL

* Technical specifications are used as a guideline, variance may occur as a result of fluctuations in line voltages.

How To Order

Series	Length	Lamps	Voltage
KT5FL	4' = 120	2 Lamps = L2	120-277V = UV V347 UV-HO (High Output) V347-HO (High Output)

7/2018